

S35DA4X11F60W-M42



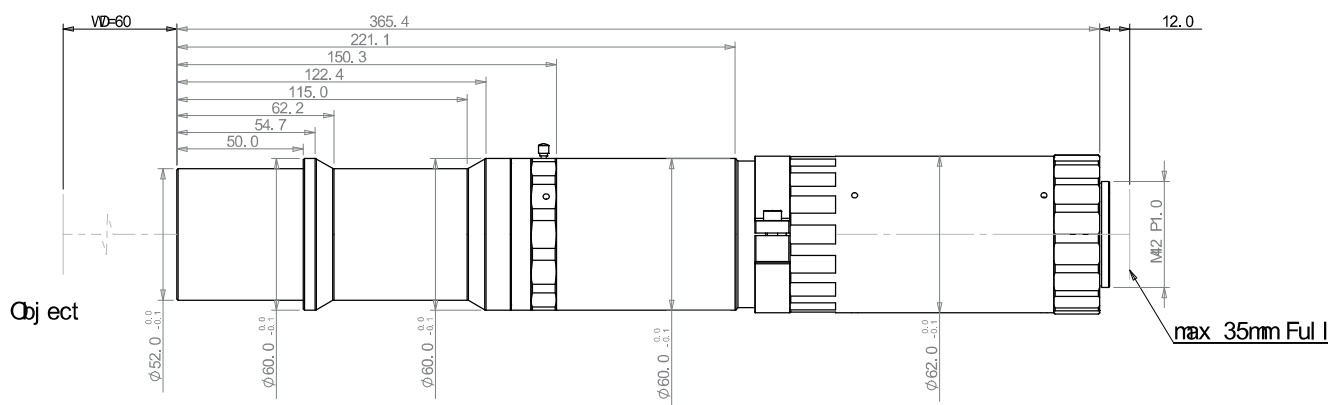
High Performance AOI Telecentric Lens

- S35DA series lenses are designed specially for compatibility with large sensor.
- Support newest developments in machine vision field: 35Full(44mm) camera and 65Mp , 71Mp camera.
- Extreme imaging aperture, extraordinary aberration correction, diffraction limited imaging resolution.
- Adjustable aperture, good telecentricity, near zero distortion, for high quality imaging.



Optical Specifications	
Magnification (x)	4.0
Object Field of View (Φmm)	11.0
Working Distance (mm)	60±1
Max Sensor Size (Φmm)	35Full (44)
Best Aperture (F/#)	11-32
Telecentricity typical (max) (deg)	0.02
Distortion typical (max) (%)	0.02
MTF30 (lp/mm)	90-32
Depth of Field (mm)	0.06-0.16
N.A	0.18-0.0624
Object side resolution (μm)	1.8-5.4
Length of I/O (mm)	437±1

Field of View (mm × mm)	
GMAX3265(29.9x22.4)	7.5x5.6
CMV50000(36.43x27.62)	9.1x6.9
Mechanical Specifications	
Mount	M42
Length (mm)	365.4
Weight (kg)	-
Coaxial Light	NO
Iris	YES



- * World Top Level Of Telecentric Lenses Factory
- * Fast Leadertime 3 working days
- * 3000+ Models Lenses
- * To Be No.1 On TC

www.soyocctv.com | www.soyocctv.cn

Your Better Partner At Telecentric Lenses